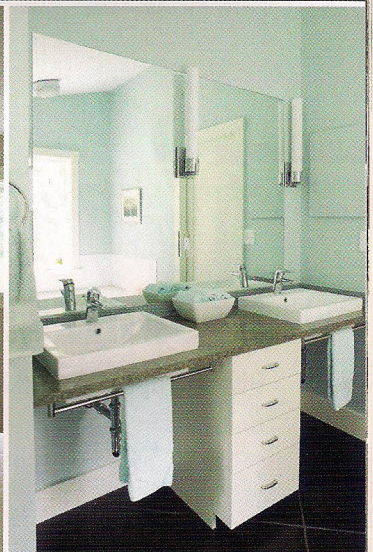




Rustic Texture, Contemporary Twist

DESIGNER: JEANNE HANDY ▶
JEANNE HANDY DESIGNS

Photography: Randolph Ashey



Jeanne Handy's design process begins with getting to know her clients beyond their aesthetic: what in life is most important to them, where do they find tranquility, what brings them joy? "Information like this is invaluable when designing a home," she says. "One of the delights of this project was the clients' terrific art and furniture collection that they had gathered both from their travels around the world and from past generations of their family." The homeowners were working with architect Kevin Moquin to convert their barn into a year-round, energy-efficient home suitable for retirement. The original farmhouse, which had been in the family for generations, would become a guesthouse for their growing family and friends. Handy's task: complement, highlight, and unite their collection of antique furniture and art with a more contemporary, eco-friendly, and

highly functional aesthetic. Her tools: color, texture, and light. "We chose a simple, fluid color palette inspired by the owners' art collection and employed rich salvaged boards from the barn to add texture to select vertical and horizontal surfaces," she explains. Instead of being hidden by trim or wallboard, beams were exposed and painted to open up the space. Cabinets are constructed of maple Europly (FSC-certified formaldehyde-free plywood), and floors are cocoa-stained concrete. Hand-forged lights provide just the right balance of rustic and contemporary. A first-floor master suite that accommodates multiple forms of mobility will allow this space to be a truly lifelong home.

FOR MORE: JEANNEHANDYDESIGNS.COM, 207-773-2966